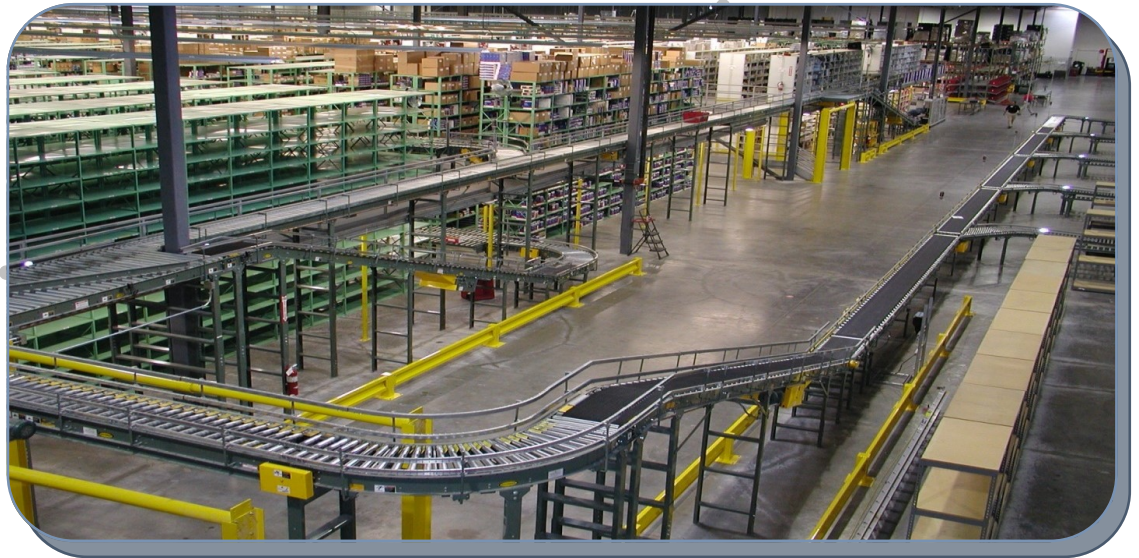


WAREHOUSE MANAGEMENT SOLUTION



**Siggins**<sup>™</sup>  
**eWMS**



Siggins eWMS - an innovative and complete solution to automate operational processes within modern distribution centers.



[www.siggins.com](http://www.siggins.com)



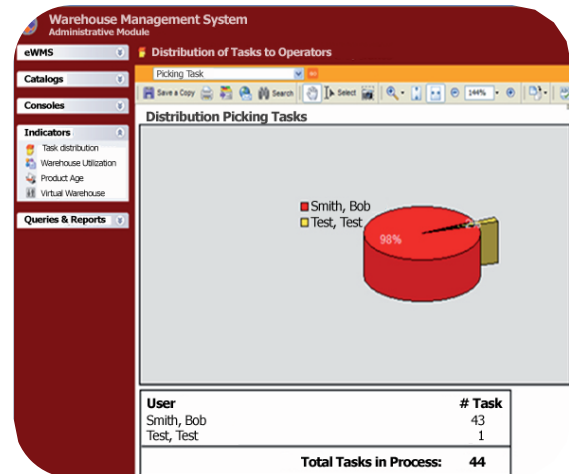
## Organize Your Work Quickly and Effectively



Siggins eWMS represents a comprehensive technology solution. The platform automates operational and management processes for DC's of all sizes and markets served. Our technology is proven and economical, providing outstanding rates of return - enabling clients to be increasingly competitive.

We have successful implementations for national and international clients. We are providers of both the software and hardware required for a turn-key implementation. We offer integral solutions with outstanding performance, and our experienced and knowledgeable support teams become effective members of our client's team.

## Administrative Module



Manage your DC virtually using easy-to-configure pull down screens that provide visibility to all aspect of DC operations through performance indicators.

## Mobile Module



The online system reflects all of the transactions involving physical product movements and eWMS seamlessly operates through handheld devices.

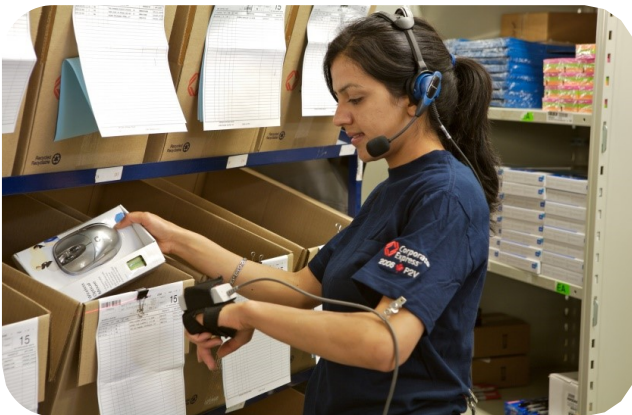


# EXPERIENCE *the* DIFFERENCE



## Features

- Web Based
- Friendly User Interface
- Warehouse Automation through directed activities.
- User interface compatible with Mobile devices
- Multilingual: English/Spanish
- Barcode, RFID and Voice Recognition



## Abilities

- Workload Balance
- Real Time Task Assignment by Supervisors
- Fast Order Processing
- Status by Location
- Bin Locations
- Lot Control, FIFO, LIFO, Expiration
- Online Reports



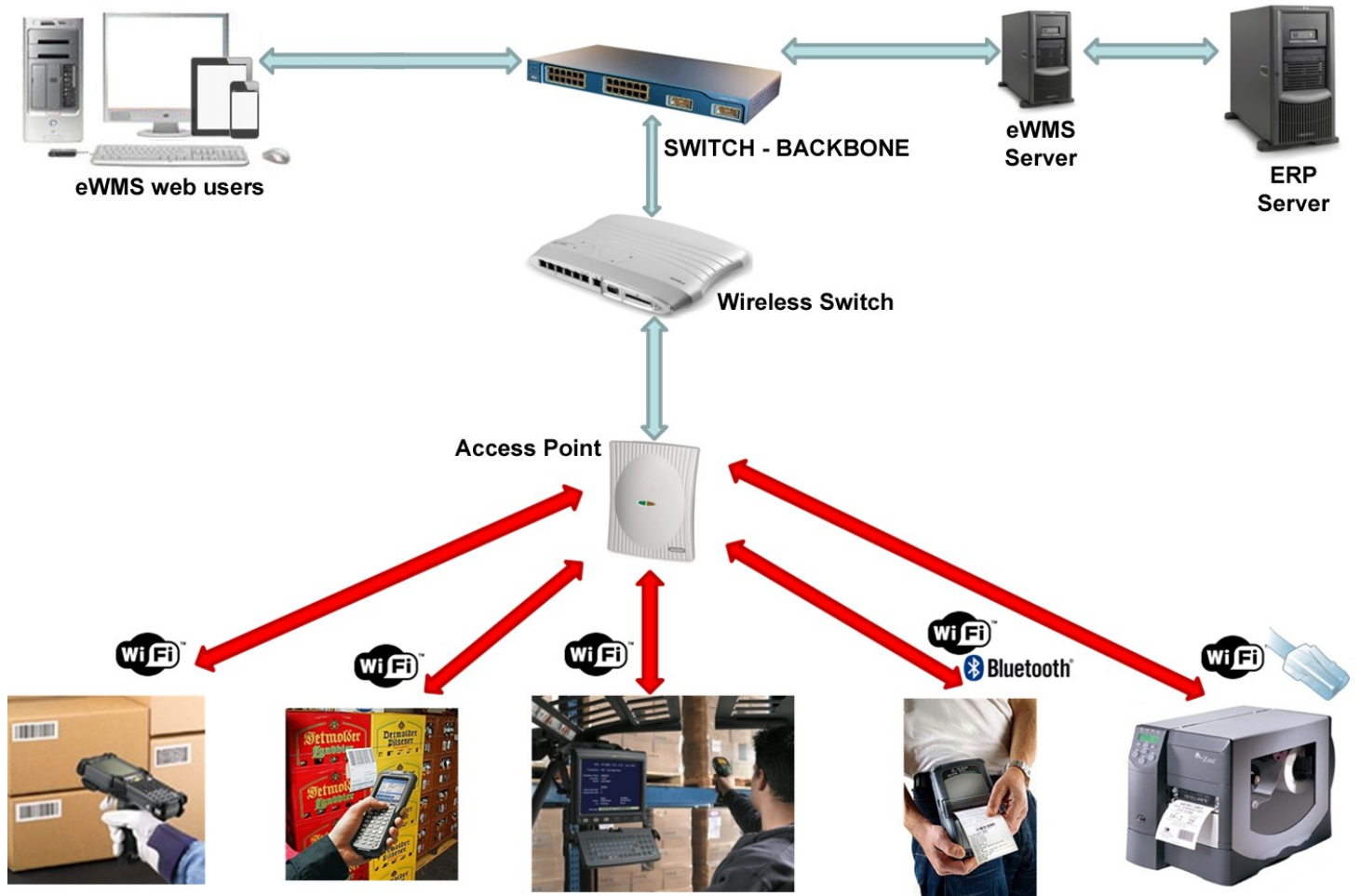
## Reports

- Dashboards that Drive Processes
- Inventory Transaction Optimization
- Track Worker Performance
- Provides tools to Measure warehouse performance.
- 'Virtual' View of Warehouse
- Future load visibility
- Optimize Warehouse Processes through Best Practices

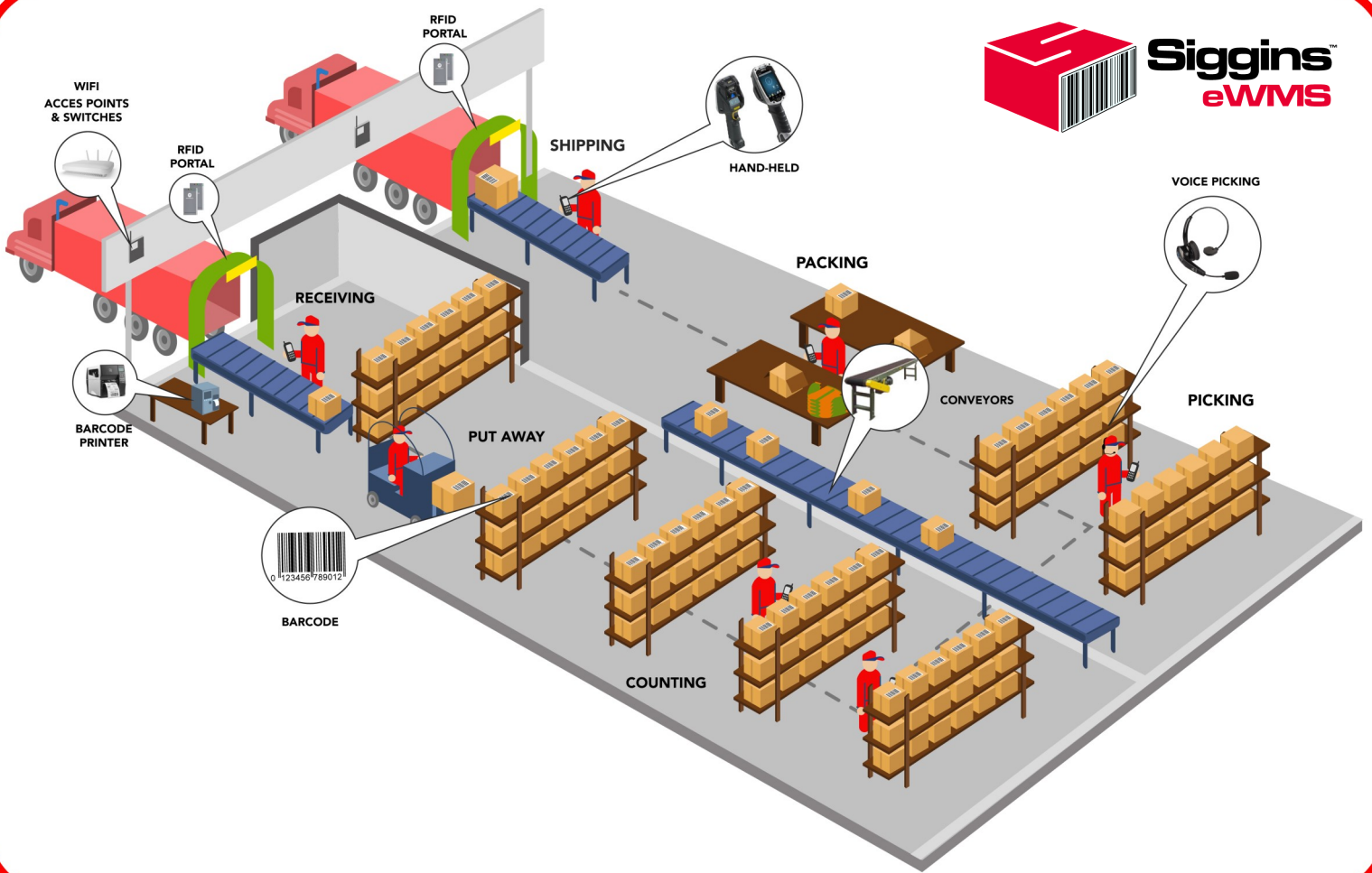
## Benefits

- Personnel and material resource Management
- Enhance Customer Service
- Improve Customer Satisfaction and Loyalty
- Increase Inventory Turns
- Improve Traceability
- Reduce Operating Costs
- Achieve Near 100% Accuracy

# CONNECTING EVERY STEP OF YOUR PROCESS



# CONNECT *your* WHOLE ENTERPRISE



**Siggins**<sup>™</sup>  
**eWMS**

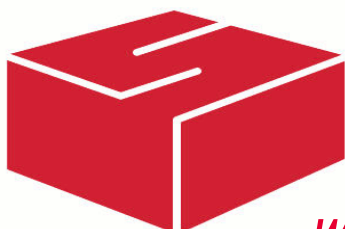
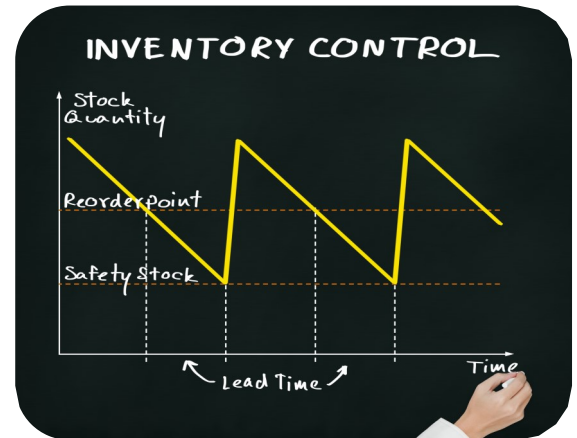
▶ *your* COMPLETE INVENTORY SOLUTION



**Siggins**  
eWMS

## KEY BENEFITS

- **Customer Service:** Improve the response times of your shipments through picking intelligently, eliminating order checking and routing product.
- **Inventory Management:** Track the location of items in stock or in transit for shipping (crossdocking). Replenish SKU's according to pre-set minimums and maximums.
- **Administrative Consoles:** Control most DC functions from a desktop computer or mobile tablet. Track employee performance, set benchmarks and manage wave picking.
- **Automatic Data Capture:** Reduce costs through process optimization and real time inventory management with instant data visibility.
- **Inventory Accuracy:** Increase inventory accuracy by checking and confirming inventory put-away and order picking. Use defined policies to automate and manage inventory moves.
- **Virtual Distribution Center (VDC):** Realize real-time visibility of accurate inventory data throughout your enterprise.



**Siggins**<sup>™</sup>

*We know Warehousing and Distribution*

512 East 12th Ave  
North Kansas City, MO 64116  
(800) 383-3218  
[www.siggins.com](http://www.siggins.com)

